



THE MOST BELIEVABLE ARCHITECTURAL STONE VENEER IN THE WORLD™







THE MOST BELIEVABLE  
ARCHITECTURAL STONE VENEER  
IN THE WORLD



Believability is at the very core of our company philosophy. For over 45 years, Eldorado Stone has been refining the art of architectural stone veneer. When you set your eyes on Eldorado Stone, it looks authentic, natural and—most of all—believable. Take a closer look at Eldorado Stone and you’ll see the difference: unmatched depth and variation of colors, crisp textural details and one of the most extensive selections of stone profiles and colors in the world.

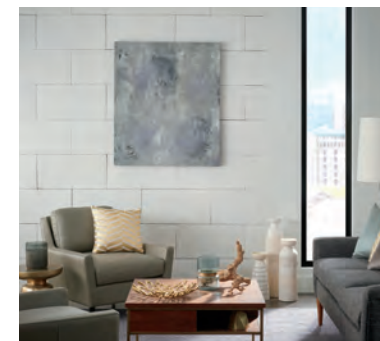


*Rustic...*



*to Refined*

Experience the limitless design opportunities only Eldorado Stone makes possible with over 150 highly authentic architectural stone and brick veneers.















TOP: Seashell Cut Coarse Stone (pg. 31), Ocean Floor LedgeCut33 (pg. 32) and Linen European Ledge (pg. 33) with a dry-stack grout technique. © 2016 Brett Beyer Photography  
 BOTTOM: Dove Tail Marquee24 (pg. 30) with a dry-stack grout technique.

Cottonwood European Ledge (pg. 33) with a dry-stack grout technique.





Buckskin Mountain Ledge (pg. 53) with a dry-stack grout technique.





















Oyster Cut Coarse Stone (pg. 31) with a dry-stack grout technique.



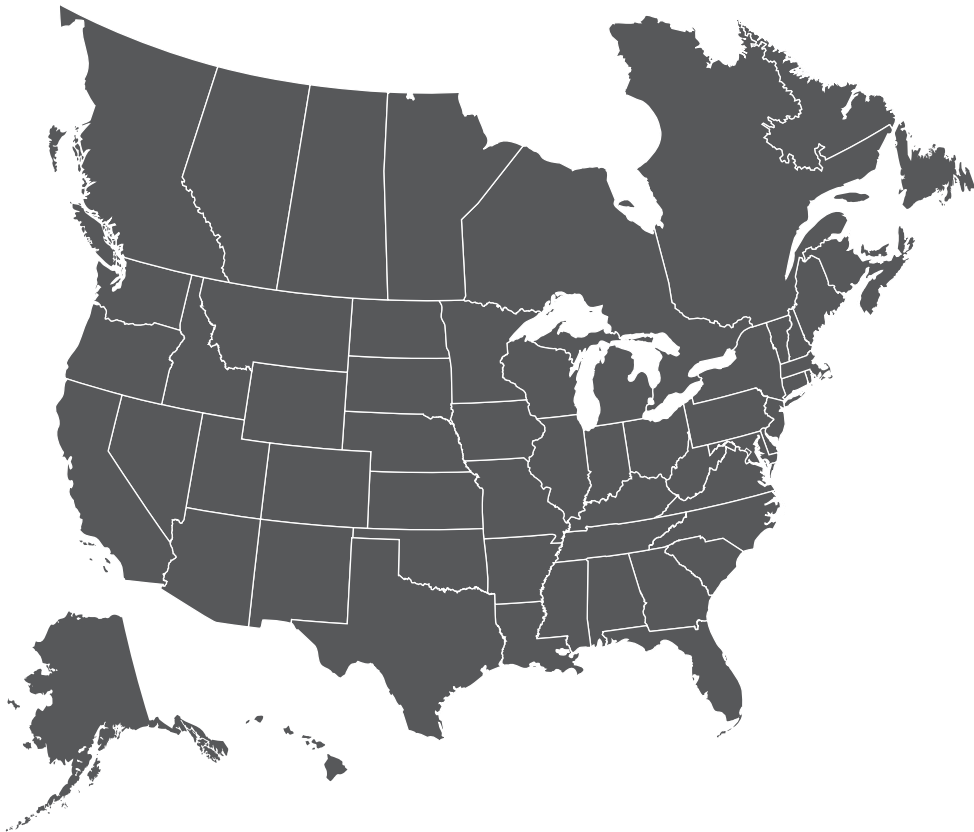
Oyster Cut Coarse Stone (pg. 31) with a dry-stack grout technique (6" h stones only/custom selection).  
© 2016 Brett Beyer Photography







# NATIONWIDE STONE VENEER



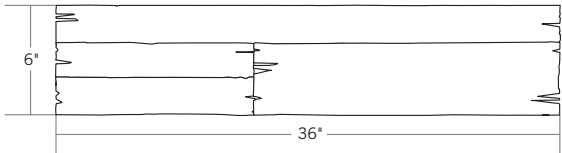
Nationwide profiles are among our most popular stones and are available coast to coast, transcending geography. Whether you’re remodeling a farmhouse in Pennsylvania, building a lodge in Colorado, restoring a ranch in Arizona or renovating a coastal home in California, there’s a Nationwide profile—or combination of Nationwide profiles—for the job.

*For product availability outside the Continental United States & Canada, visit [www.eldoradostone.com](http://www.eldoradostone.com) to find your local distributor.*

- **NATIONWIDE** | Pg. 24-45
  - EASTERN | Pg. 46-49
  - NORTHWESTERN | Pg. 50-51
  - WESTERN | Pg. 52-55



INTRODUCING  
**VINTAGE RANCH™**  
WOOD PLANK



Milled to 2", 4" and 6" heights with subtle depth variations, **Vintage Ranch** has been designed as a panelized system for a quick installation process.

Enjoy the warmth and inviting texture of Vintage Ranch, our authentic interpretation of reclaimed barn wood. This American classic is composed of hand-selected boards culled for their celebrated patina and timeless beauty.



**NEW Saddlewood** Vintage Ranch



**NEW Parchwood** Vintage Ranch



**NEW Foxwood** Vintage Ranch



**NEW Doverwood** Vintage Ranch





LATITUDE 30™

\*Profiles shown installed using a .25" standard grout technique.



Citywalk Latitude30



Seaford Latitude30



Urban Frost Latitude30

VANTAGE 30™



Midday Vantage30



Southern Peak Vantage30



Stormcloud Vantage30



White Elm Vantage30



White Elm Vantage30 using a dry-stack grout technique.





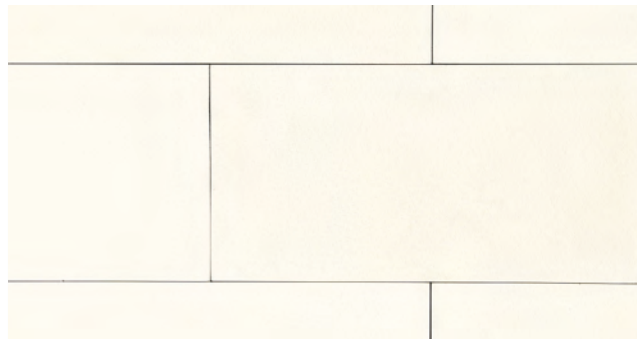
## LONGITUDE 24™



**Foggy Meadow** Longitude24



**Silent Grey** Longitude24



**Snowdrift** Longitude24

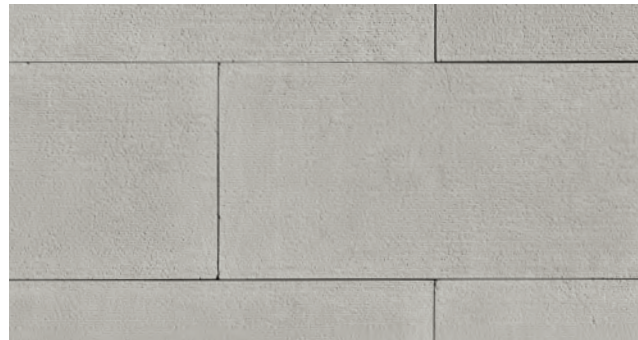


**Wild Oat** Longitude24

## ZEN 24™



**Burlap** Zen24



**Nickel** Zen24



**Soft Light** Zen24



Combine stone profiles to create unique textures and colors. The raked faces of **Soft Light Zen24** adds subtle texture and depth to the smooth surface of **Snowdrift Longitude24**.

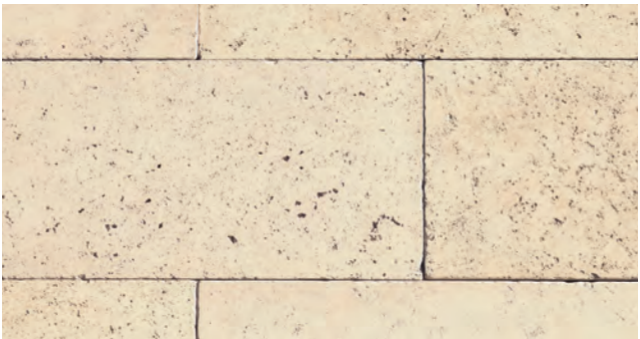




MARQUEE 24™



Dove Tail Marquee24



Sanderling Marquee24

SIERRACUT 24™



Hidden Creek SierraCut24



Monument SierraCut24



Zenith Grey SierraCut24

RIDGETOP 18™



Blackhawk Ridgetop18



Granite Spire Ridgetop18



Oakleaf Ridgetop18



Whisper White Ridgetop18

CUT COARSE STONE™



Oyster Cut Coarse Stone



Madrona Cut Coarse Stone



Seashell Cut Coarse Stone





# LEDGE CUT 33™



**Beach Pebble** LedgeCut33



**Ocean Floor** LedgeCut33



**Sage** LedgeCut33



**Birch** LedgeCut33



**Golden Oak** LedgeCut33



**Cottonwood** European Ledge



**Iron Mill** European Ledge



**Sidewalk** European Ledge

# EUROPEAN LEDGE™



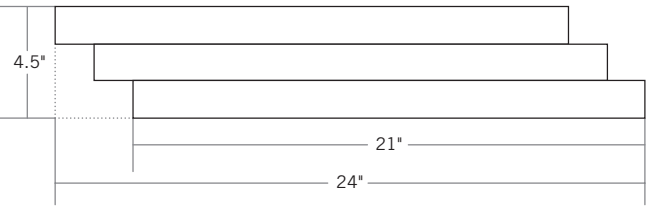
**Glacier** European Ledge



**Linen** European Ledge



**Zinc** European Ledge



**European Ledge** creates a perfect fusion of old-world stonework and modern design. The 1.5" precision-cut ledge stones are molded into 4.5" h x 24" w panels. The stair stepped edge creates a tight-fit, eliminating unsightly vertical joints.





# STACKED STONE



**Alderwood** Stacked Stone



**Black River** Stacked Stone



**Pagosa Springs** Stacked Stone



**Silver Lining** Stacked Stone



**Castaway** Stacked Stone



**Chapel Hill** Stacked Stone



**Daybreak** Stacked Stone



**Dry Creek** Stacked Stone

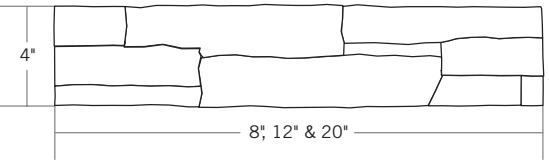


**Nantucket** Stacked Stone



**Santa Fe** Stacked Stone

# STACKED STONE CONTINUED



Individual **Stacked Stone** panels vary greatly in the cut shapes within their layouts and are available in three different lengths to help avoid repetition while offering quick and convenient installation.

# RUSTIC LEDGE®



**Cascade** Rustic Ledge



**Clearwater** Rustic Ledge



**Sawtooth** Rustic Ledge



**Sequoia** Rustic Ledge





MOUNTAIN LEDGE



Bitterroot Mountain Ledge



Durango Mountain Ledge



Mesa Verde Mountain Ledge



Sierra Mountain Ledge



Yukon Mountain Ledge

MOUNTAIN LEDGE PANELS



Pioneer Mountain Ledge Panels



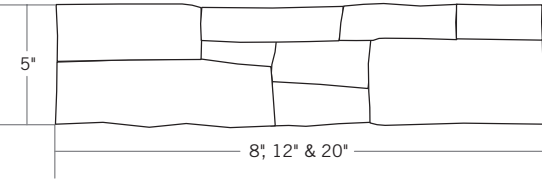
Russet Mountain Ledge Panels



Silverton Mountain Ledge Panels



Whiskey Creek Mountain Ledge Panels



Mountain Ledge Panels quickly install with 5" heights and varying stone lengths. The rustic surface textures and random stone heights create a highly authentic appearance.





CLIFFSTONE®



Banff Springs Cliffstone



Boardwalk Cliffstone



Lantana Cliffstone



Mesquite Cliffstone



Barley Cliffstone



Cambria Cliffstone



Manzanita Cliffstone



Montecito Cliffstone



Bodega Bluffstone



La Plata Bluffstone



Coos Bay Bluffstone



Mineret Bluffstone



Prescott Bluffstone

BLUFFSTONE™





COASTAL REEF™



Pearl White Coastal Reef



Sanibel Coastal Reef

ASHLAR



Santa Barbara Ashlar

LIMESTONE



San Marino Limestone



Savannah Limestone

ROUGH CUT®



Casa Blanca Rough Cut



York Limestone



Autumn Leaf Rough Cut



Moonlight Rough Cut



Vineyard Trail Rough Cut



Wheatfield Rough Cut





COUNTRY RUBBLE™



Bella Country Rubble



Capri Country Rubble



Cognac Country Rubble



Polermo Country Rubble

CYPRESS RIDGE®



Catania Cypress Ridge



Countryside Cypress Ridge



Orchard Cypress Ridge



Santa Maria Cypress Ridge

FIELDLEDGE®



Andante Fieldledge



Meseta Fieldledge



Padova Fieldledge



Veneto Fieldledge

HILLSTONE®



Lucera Hillstone



Verona Hillstone





Shadow Rock



Bronze Shadow Rock



Chesapeake Shadow Rock



Somerset Shadow Rock



Teton Shadow Rock

River Rock



Colorado River Rock



Rio Grande River Rock



Yakima River Rock

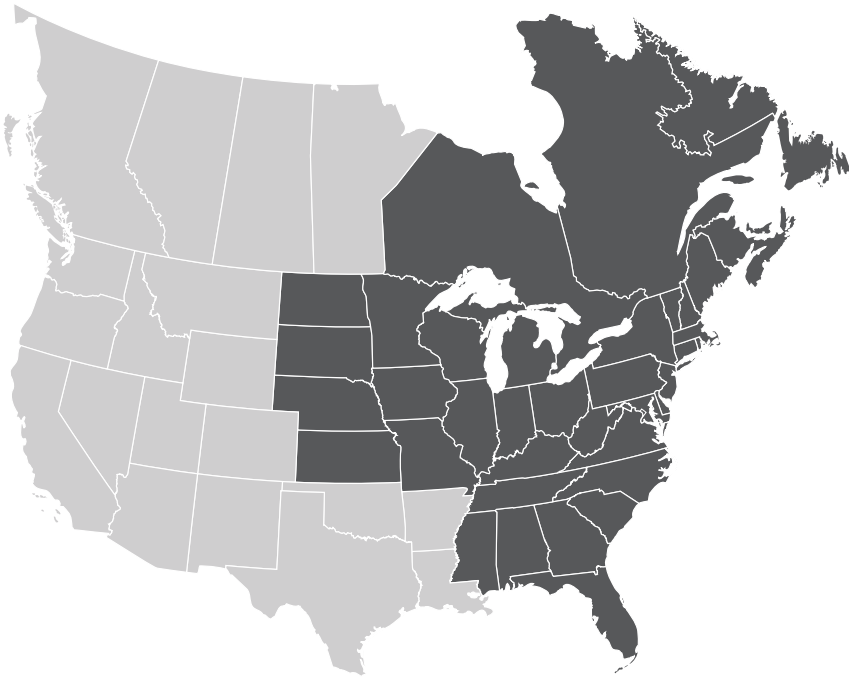


Teton Shadow Rock using a dry-stack grout technique.





# EASTERN REGIONAL STONE VENEER



- Alabama  
Connecticut  
Delaware  
District of Columbia  
Florida  
Georgia  
Illinois  
Indiana  
Iowa  
Kansas  
Kentucky  
Maine  
Maryland  
Massachusetts  
Michigan  
Minnesota  
Mississippi
- Missouri  
Nebraska  
New Hampshire  
New Jersey  
New York  
North Carolina  
North Dakota  
Ohio  
Pennsylvania  
Rhode Island  
South Carolina  
South Dakota  
Tennessee  
Vermont  
Virginia  
West Virginia  
Wisconsin

The Eastern Region has a rich tradition of building with stone since colonial times. The abundance of raw materials was of great use to the skilled European stone masons who settled here.

*For product availability outside the Eastern United States & Eastern Canada, visit [www.eldoradostone.com](http://www.eldoradostone.com) to find your local distributor. Regional profiles available in states & provinces indicated above; additional shipping charges apply if ordered outside this region.*

## BLUFFSTONE™



Olive Grove Bluffstone



Millstream Country Rubble



River Gorge Country Rubble

## MOUNTAIN LEDGE



Asheville Mountain Ledge



Lexington Mountain Ledge



Chestnut Ridge Mountain Ledge



Charleston Mountain Ledge



Walnut Ridge Mountain Ledge





L I M E S T O N E



Bridgeport Limestone



New Haven Limestone

S H A D O W R O C K



Crescent Peak Shadow Rock



Willow Shadow Rock

R O U G H C U T<sup>®</sup>



Brunello RoughCut



Falling Spring RoughCut

S T A C K E D S T O N E



Dark Rundle Stacked Stone

W E A T H E R E D G E<sup>™</sup>



Amber Falls Weather Edge

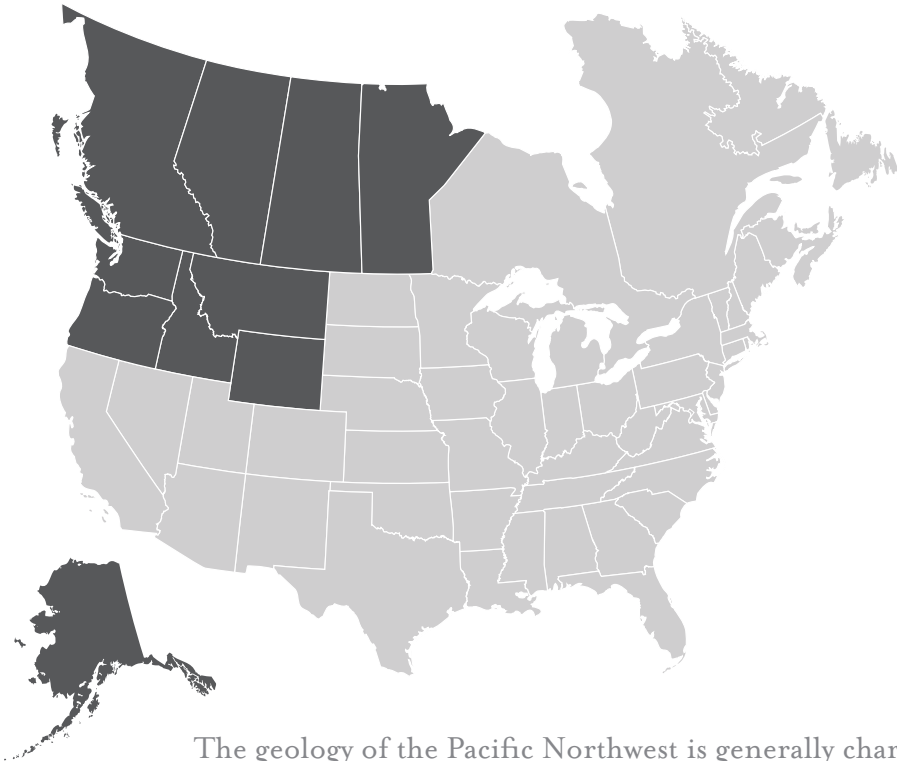


Crescent Peak Shadow Rock with a standard grout technique.





NORTHWESTERN REGIONAL STONE VENEER



Alaska  
Idaho  
Montana  
Oregon  
Washington  
Wyoming

The geology of the Pacific Northwest is generally characterized by dark, rich tones and deep hues set against a lush landscape. Our profiles for this region respect the stone types used here.

*For product availability outside the Northwestern United States & Western Canada, visit [www.eldoradostone.com](http://www.eldoradostone.com) to find your local distributor. Regional profiles available in states & provinces indicated above; additional shipping charges apply if ordered outside this region.*

COBBLESTONE



Coal Canyon Cobblestone

ROUGH CUT



Brunello RoughCut

MOUNTAIN LEDGE



Black Bear Mountain Ledge

MOUNTAIN LEDGE PANELS



Warm Springs Mountain Ledge Panels



Bow Valley Mountain Ledge Panels

STACKED STONE



Slate Gray Stacked Stone

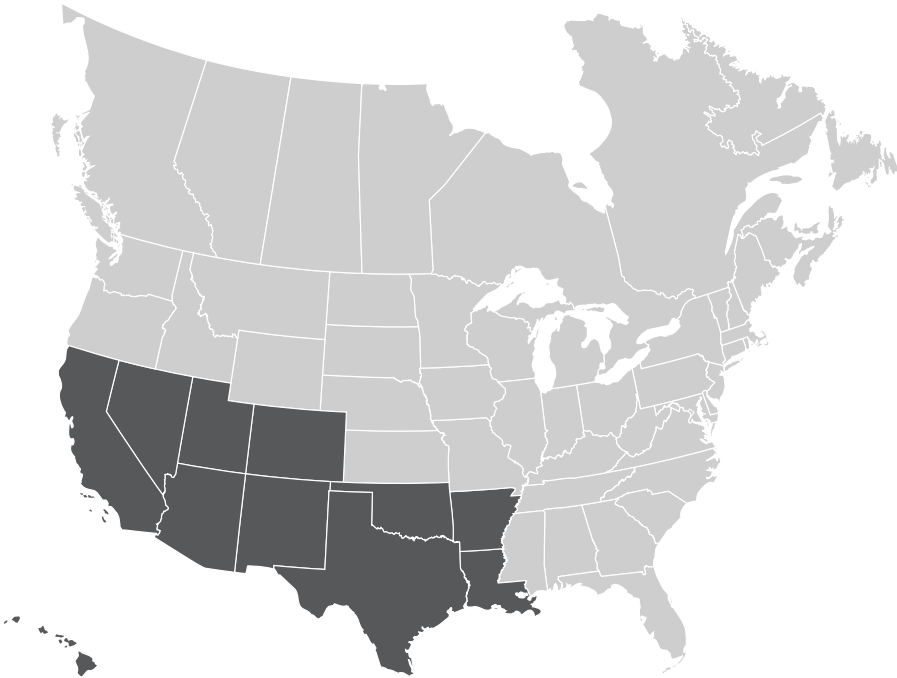


Dark Rundle Stacked Stone





# WESTERN REGIONAL STONE VENEER



Arizona  
Arkansas  
California  
Colorado  
Hawaii  
Louisiana  
Nevada  
New Mexico  
Oklahoma  
Texas  
Utah

America’s West embraces a diverse architectural palette that mirrors its grand landscape. The colors, textures and shapes found in this region embody elements of the coastal regions, Rocky Mountains and desert landscapes.

*For product availability outside the Western United States, visit [www.eldoradostone.com](http://www.eldoradostone.com) to find your local distributor. Regional profiles available in states & provinces indicated above; additional shipping charges apply if ordered outside this region.*

## COARSED STONE™



**Santa Barbara** Coarsed Stone

## COASTAL LEDGE™



**Santa Cruz** Coastal Ledge

## COBBLESTONE



**Coal Canyon** Cobblestone

## FIELDLEDGE®



**Umbria** Fieldledge

## MOUNTAIN LEDGE



**Buckskin** Mountain Ledge



**Shasta** Mountain Ledge

## LIMESTONE



**Austin Cream** Limestone



**Castillo** Limestone



**Shilo** Limestone





**HILLSTONE®**

**Molano** Hillstone

**RUSTIC LEDGE®**

**Saddleback** Rustic Ledge

**Saratoga** Rustic Ledge

**STACKED STONE**

**Desert Shadow** Stacked Stone

**Mountain Blend** Stacked Stone

**Slate Gray** Stacked Stone

**Eldorado Adobe** is the perfect material to give your project a timeless Southwestern charm with the same quality and believability you've come to expect from Eldorado Stone. Shown: **Solano CaminoAdobe** with an overgrout technique.

**CAPISTRANO ADOBE**

**Bautista** CapistranoAdobe

**Carmelo** CapistranoAdobe

**WALL CAPS**

 Wall Caps approx. 3.5" thick.  
 Available in 2 sizes:  
 16" L x 12" D  
 15.5" L x 7.5" D

**CAMINO ADOBE**

**Solano** CaminoAdobe






A CHUNK OF HISTORY™



Eldorado Brick isn't simply a great building material; it's a piece of history. Molded from centuries-old European dwellings, Eldorado Brick has distinct earthen textures, irregular size dimensions and comes in both traditional and design-forward colors. Eldorado Brick can help transform any space to your desired style whether it's warm with historical heritage or creative with contemporary sophistication.



**MODENA**BRICK®



**Cassis** ModenaBrick

**ROMA**BRICK®



**Bracciano** RomaBrick



**Brolio** RomaBrick



**Castello** RomaBrick

**VIA**BRICK®



**Cortona** ViaBrick



Chalk Dust TundraBrick with a standard grout technique.

**TUNDRA**BRICK®



**Ashland** TundraBrick



**Chalk Dust** TundraBrick



**Hartford** TundraBrick



**Riverbed** TundraBrick





ARCHITECTURAL ACCENTS & ACCESSORIES

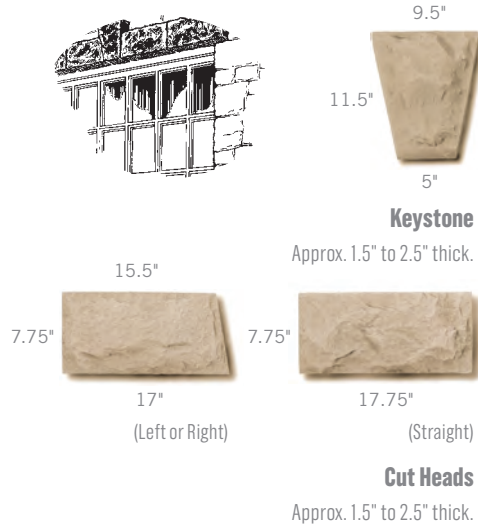
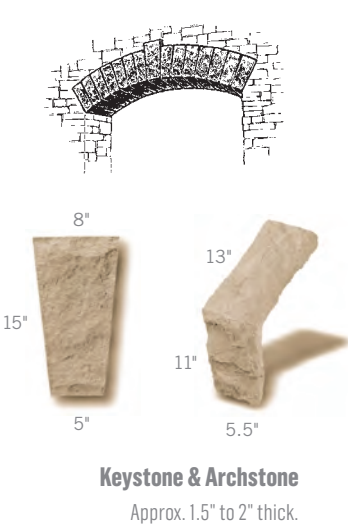
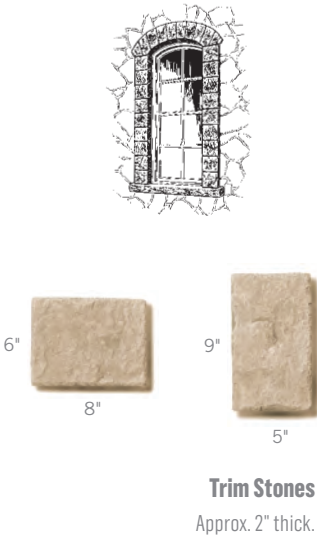


It's the final details that make an ordinary project an extraordinary one, and Eldorado Stone Architectural Accents are no exception to this philosophy. Each accent has been created by hand to meticulously emphasize unique color hues and detailed sculptural characteristics... the essence of true masonry craftsmanship.



ASHLAR ACCENTS

Ashlar Accents have been sculpted to create uniform edge details. The consistent shape simplifies the installation process, while providing the characteristics and texture of natural stone. Available in Taupe, Earth, Smoke & Buckskin.



CRAFTSHIELD™

**Preserving the Art of Masonry.** CraftShield is a protective treatment that preserves the intended artistry and beauty of architectural stone veneer while safeguarding the surface from nature's elements. Designed for use on concrete and most masonry surfaces including Eldorado Stone and Eldorado Brick veneer, CraftShield goes on wet and dries invisible to the eye. It's low odor and alkaline-stable formula is ideal for both exterior and interior applications and offers 10-Year Protection to help resist staining, spalling, cracking and other damage related to water intrusion. Gallon covers 150-200 sq. ft. of surface area.





CHISELED EDGE™ ACCENTS

Historically, masons have worked with natural stone to create unique accent pieces to finalize their projects. Chiseled Edge Accents feature a hand-dressed appearance with a uniform yet rustic detail. Available in Taupe, Earth, Smoke & Buckskin.



**Wainscot Sill 90°**  
8"L (both exterior sides) × 3"D × 2"H (face) to 2.5"H (back)



**Wainscot Sill 135°**  
7.5"L (both exterior sides) × 3"D × 2"H (face) to 2.5"H (back)



**Wainscot Sill Straight**  
19.75"L × 3"D × 2"H (face) to 2.5"H (back)



**Hearthstone**  
20"L × 20"D × 2"H



**Peaked Wall Caps**  
Available in 2 sizes:  
20" × 16" (2"H sides with a 3.5"H peak)  
20" × 12" (2.375"H sides with a 3.5"H peak)



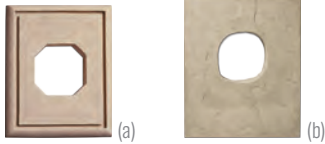
**Textured Column Caps**  
Cap peak approx. 5.5"H.  
Available in 3 sizes with or without hole:  
26" × 26" (2.5"H sides)  
22" × 22" (2.5"H sides)  
18" × 18" (2.5"H sides)



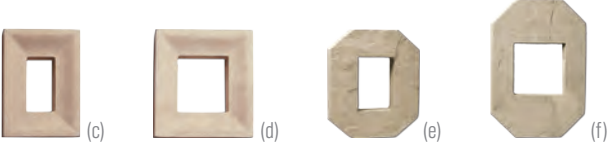
**Column & Wall Caps**  
Column Caps approx. 2.5" thick.  
Available in 2 sizes:  
30" × 24"  
24" × 24"  
Wall Caps approx. 2.25" thick.  
Available in 3 sizes:  
37" × 12"  
37" × 9"  
37" × 6"

UTILITY ACCENTS

Utility Accents create a simple yet decorative way of transitioning from the utility to the stone or brick veneer. Available in Taupe, Earth, Smoke & Buckskin (see colors above).



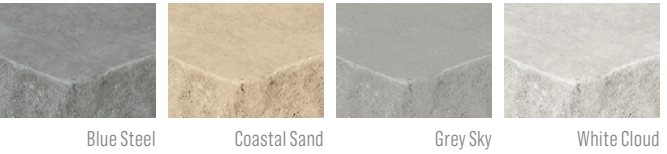
**Lightboxes**  
Approx. 1.75" thick.  
(a) 8" × 10"  
(b) 9.5" × 11"



**Electrical Boxes**  
(c) 6" × 8" (approx. 2" thick)  
(d) 8" × 8" (approx. 2" thick)  
(e) 8" × 8" (approx. 1.75" thick)  
(f) 8" × 12" (approx. 1.75" thick)

SPLIT EDGE™ ACCENTS

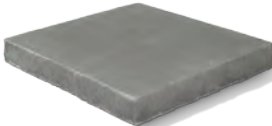
Split Edge Accents feature a 2" guillotined edge to complement our line of modern stones and contemporary color palettes.



**Column Caps**  
Available in 4 sizes:  
26"L × 26"D × 2"H  
24"L × 24"D × 2"H  
22"L × 22"D × 2"H  
18"L × 18"D × 2"H



**Wall Caps**  
Available in 2 sizes:  
12"L × 30"D × 2"H  
9"L × 30"D × 2"H



**Hearthstone**  
20"L × 20"D × 2"H



**Wainscot Sill**  
20"L × 3"D × 2"H (face) to 2.5"H (back)

SNAPPED EDGE™ ACCENTS

Snapped-Edge Accents feature irregular edge details and random undulations that look as if they had been hand chiseled on location. Additionally, each accent features subtle yet contrasting color highlights on the surface and edge details for the ultimate natural appearance. Wainscot Sills have a recessed drip edge on the underside to prevent water from returning behind the stone or dripping onto the face of the stone wall. Available in Walnut, Pewter & Sand.



**Column Caps**  
Available in 3 sizes:  
24"L × 24"D × 1.5"H  
22"L × 22"D × 1.5"H  
18"L × 18"D × 1.5"H



**Wall Caps**  
Available in 2 sizes:  
24"L × 14"D × 1.5"H  
18"L × 14"D × 1.5"H



**Hearthstone**  
20"L × 20"D × 1.5"H



**Wainscot Sill**  
19.75"L × 3"D × 1.5"H (face) to 2.5"H (back)





ELDORADO PROFILE SIZES

\*Sizes are nominal ranges. Actual sizes may vary slightly.

STONE	HEIGHT	LENGTH	THICKNESS	PAGES
Ashlar	4" – 12"	11" – 26"	.625" – 3"	41
Bluffstone	1" – 5.5"	4" – 22"	1.375" – 3.5"	39, 46
Cliffstone	1.25" – 6"	4" – 22"	1" – 2"	1, 38
Coarsed Stone	11.75"	12", 18", 24", 30"	1.5"	52
Coastal Ledge	1" – 4"	4" – 24"	1" – 2.75"	52
CoastalReef	4" – 12"	4" – 16"	1" – 1.25"	40
Cobblestone	2.5" – 12"	4" – 21"	1.875" – 2.75"	50, 53
Country Rubble	2" – 18"	4" – 18"	1" – 2.5"	42, 47
Cut Coarse Stone	3", 6", 9"	12", 18", 24"	.75" – 2.5"	8, 20, 31
Cypress Ridge	1.25" – 18"	4" – 24"	1" – 3.5"	6, 42
European Ledge Single Stone	1.5"	11"	.75" – 2.125"	8, 33
European Ledge Panel	4.5"	24"	.75" – 2.25"	33
Fieldledge	1.5" – 15"	5" – 18"	1.25" – 1.5"	43, 53
Hillstone	1" – 12"	3" – 18"	1" – 3.25"	43, 54
Latitude30	6"	30"	1"	14, 27
LedgeCut33	3"	12", 18", 24"	.75" – 2"	8, 32
Limestone	2.25" – 8"	3.5" – 17"	1" – 2.5"	40, 48, 53
Longitude24	12"	24"	1"	28
Marquee24	12"	24"	1"	8, 30
Mountain Ledge	1" – 4"	4" – 18"	1" – 3.5"	10, 36, 47, 51, 53
Mountain Ledge Panels	5"	8", 12", 20"	1" – 2.5"	37, 51
Ridgetop18	9"	18"	1" – 1.625"	31
River Rock	1.5" – 15"	3" – 18"	2" – 3.5"	44
RoughCut	2" – 11"	2" – 18.375"	1.5" – 2.5"	41, 48, 51
Rustic Ledge	1" – 5"	6.5" – 20"	1" – 2.5"	12, 22, 35, 54
Shadow Rock	2" – 10"	5" – 24"	2" – 3.5"	44, 49
SierraCut24	12"	24"	1" – 2.5"	30
Stacked Stone	4"	8", 12", 20"	.625" – 2"	16, 34, 48, 51, 54
Vantage30	6"	30"	1" – 1.625"	27
Vintage Ranch	6"	36"	1.125" – 1.375"	4, 25
Weather Edge	1.25" – 8"	5" – 25"	1" – 3.5"	48
Zen24	12"	24"	1"	28
ADOBE				
CaminoAdobe	5"	15.5"	1.375" - 1.5"	55
CapistranoAdobe	3.5"	15"	1.25"	55
BRICK				
ModenaBrick	2.5"	8"	.75" – .875"	58
RomaBrick	1.5" – 2"	9" – 10.25"	1.125" – 1.25"	58
TundraBrick	2.5"	7.875"	.875"	18, 59
ViaBrick	1.25" – 1.75"	7" – 7.25"	.875"	58

ELDORADO IS MORE THAN STONE



Create the ultimate living environment with our collection of handcrafted products—visit us online at [eldoradostone.com](http://eldoradostone.com) today.

LEFT: Chalk Dust TundraBrick (pg. 59) with an overgrout technique.



Because Eldorado Stone replicates natural stone, variations should, and can be expected. Even though colors in this brochure are as close to the actual stone as possible, photographic and printing techniques — and actual viewing conditions — can alter perception of color. It is recommended to obtain a sample of Eldorado Stone before placing an order.

If you would like more information on prices, availability of stone, the name of your local distributor, or answers to any questions not covered in this brochure, please contact us. We would be happy to assist you with your stone building plans. Detailed installation instructions, specifications, technical information and test data is available upon request.

**800.925.1491** [eldoradostone.com](http://eldoradostone.com)

Please join us on:

